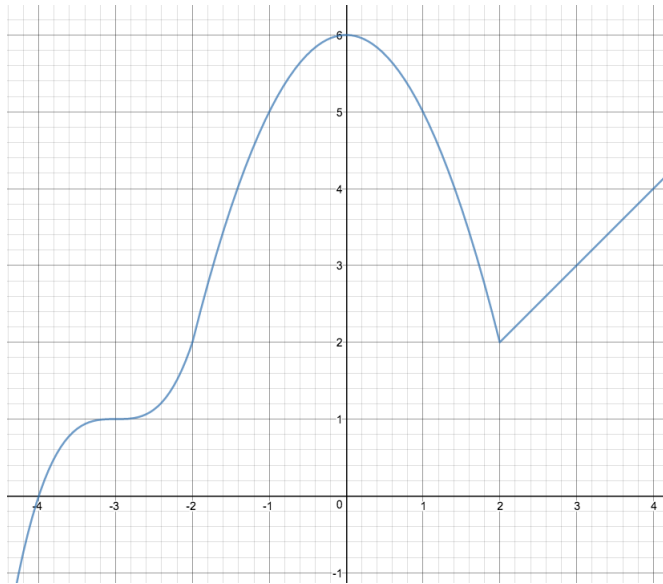


**Problem of the Day** (October 17, 2017)

The graph of a function  $f$  is given below. Identify the critical numbers of  $f$  and any local extrema of  $f$  on the interval  $(-4, 4)$ .



**Problem of the Day** (October 17, 2017)

The graph of a function  $f$  is given below. Identify the critical numbers of  $f$  and any local extrema of  $f$  on the interval  $(-4, 4)$ .

